

22

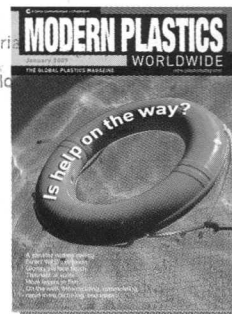


World Tour

CONTENTS



Instituto Nacional
de Tecnología Industrial
Extensión y Desarrollo
División Biblioteca

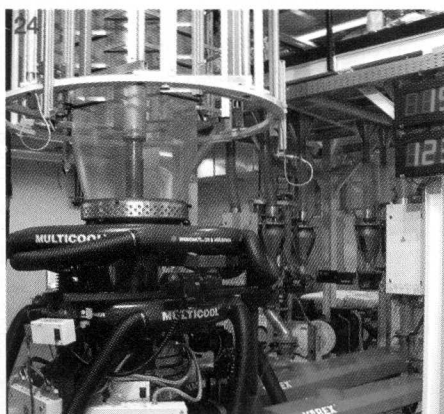


42 On our cover: Help on the way?
A new administration takes the helm in the U.S. and has its work cut out charting a course for recovery. What have processors seen so far, and what might they expect?

14 Processing Trends
Direct extrusion of wood-plastic composites is attracting processors' interest for a variety of reasons, not the least of which are efficiency and lower cost. Plus, thinner walls, less weight; beautiful surfaces.

28 Design Focus
The future of extruded films appears complex, as controlling costs becomes imperative in regard to barrier, tie, and outer layers, and processors look to incorporate more reclaim and cheaper resins.

40 At IPF, the link between "all-electric" and Japan's IM machinery OEMs becomes ever more clear.
42 Before he even took office, all eyes were on Barack Obama. An investment banker looks at what the future may hold for processors.



28



50 Spotlight
An industrial blowmolder sets its sights on injection molding profits.



Also in this issue

- 10 First Look: News & Analysis**
- 12 As I See It: Insight from industry leaders**
- 22 Material Thoughts: The latest materials developments**
- 24 Product Watch: New products from around the world**

6 Contact MPW
9 Letter from the editor
31 Focus on India

45 Classified advertising
49 Calendar of events
49 Advertiser index