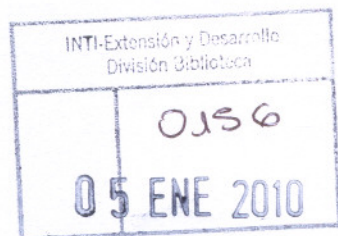


Vol. 70, No. 9/10

# CHROMATOGRAPHIA

An International Journal for Rapid Communication in Chromatography, Electrophoresis, and Associated Techniques



## November 09

CHRGB7 1303-1524 (2009)

### Scientific Editors

T. A. Berger  
Englewood, FL, USA  
K.-S. Boos  
München, Germany  
H. Lingeman  
Amsterdam, The Netherlands  
G. Massolini  
Pavia, Italy  
R. M. Smith  
Loughborough, UK

### Technical Editors

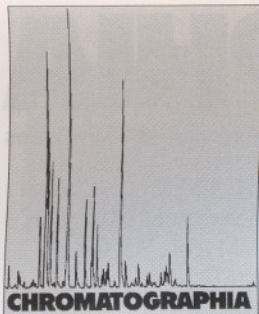
E. R. Adlard  
Burton, UK  
K. D. Altria  
Harlow, UK  
S. Brandt  
Liverpool, UK  
I. W. Davies  
Cambridge, UK

### Publisher

R. Birkelbach  
Wiesbaden  
Germany

[www.chromatographia.com](http://www.chromatographia.com)

# CHROMATOGRAPHIA



# Contents

## Vol. 70, 2009, November (No. 9/10)

### Editorial

- 65th Birthday of Professor Maria Dolores (Lola) Luque de Castro  
C. Cámara, J. L. Luque-García 1303

### Review

- A Review of Microdialysis Sampling Systems  
N. Torto 1305

### Originals

#### Column Liquid Chromatography

- Duplicating the Retention of Cationic Analytes Obtained with Ammonium Formate Mobile Phases when Switching to UV Transparent Mobile Phase Additives in RP-LC  
E. Loeser, S. Babiak 1311

- Screening and Identification of Permeable Components of Radix et Rhizoma Rhei Extract by Use of Immobilized Artificial Membrane Chromatography  
Wenping Zhang, Jin Sun, Yongjun Wang, Xiaohong Liu, Yinghua Sun, Rong Lu, Zhonggui He 1321

- Comparative LC Enantioseparation of Novel PPAR Agonists on Cellulose- and Amylose-Based Chiral Stationary Phases  
L. Piemontese, S. Faliti, G. Carbonara, A. Laghezza, P. Tortorella, F. Loiodice 1327

- Enantioselective Analysis of Fluoxetine and Norfluoxetine by LC in Culture Medium for Application in Biotransformation Studies Employing Fungi  
K. B. Borges, L. T. Okano, M. T. Pupo, P. S. Bonato 1335

- Chemometrically Assisted Development and Validation of LC for Simultaneous Determination of Carbamazepine and Its Impurities Iminostilbene and Iminodibenzyl in Solid Dosage Form  
P. Džodić, L. Živanović, A. Protić, M. Zečević, B. Jocić 1343

- LC-MS-MS in MRM Mode for Detection and Structural Identification of Synthetic Hypoglycemic Drugs Added Illegally to 'Natural' Anti-Diabetic Herbal Products  
Wensheng Pang, Huiwan Yang, Zhisheng Wu, Meixia Huang, Juan Hu 1353

- Analysis of Bioactive Saponins in Fructus *Gleditsiae abnormalis* and Fructus *Gleditsiae sinensis* by LC-ELSD  
Yufeng Xia, Zhengzhen Gao, Yue Dai, Qiang Wang 1361

- Quality Evaluation of *Petasites tricholobus* through Simultaneous Determination of Four Bioactive Bakkenolides by LC  
Yu-Liang Wang, Meili Guo, Yan Wang 1367

- High-Throughput Screening of Drugs of Abuse in Urine by Supported Liquid-Liquid Extraction and UHPLC Coupled to Tandem MS  
A. Maquille, D. Guillarme, S. Rudaz, J.-L. Veuthey 1373

- Simultaneous Determination of Anabolic Androgenic Steroids and Their Esters in Hair by LC-MS-MS  
Min Shen, Hui Yan, Ping Xiang, Baohua Shen 1381

- Validity Assessment for the Results of Three Inflammatory Markers in Exhaled Breath Condensate: A Pilot Study  
L. M. Gonzalez-Reche, D. Schaefer, T. Göen, T. Kraus 1387

#### Gas Chromatography

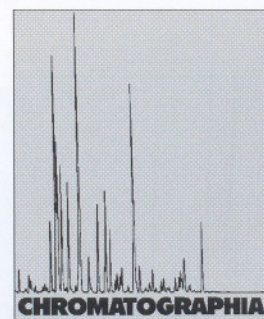
- The Examination of the Degree of Coverage of the Fused Alumina Abrasive by Resol Wetting Agent by Inverse GC  
A. Voelkel, B. Strzemiecka, T. Jesionowski 1393

- GC-MS Determination of Atenolol Plasma Concentration after Derivatization with *N*-Methyl-*N*-(trimethylsilyl)trifluoroacetamide  
B. Yilmaz, S. Arslan 1399

- Improved Method for the Determination of Cyanuric Acid in Animal Feed by GC-MS  
Hubert P. O. Tang, Shirley S. L. Lai, Ashley Y. H. Lai, W. O. Lee 1405

# Contents

## Vol. 70, 2009, November (No. 9/10)



### Full Short Communications

#### Column Liquid Chromatography

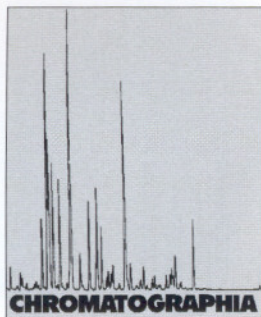
- Stability-Indicating LC-PDA Method for Determination of Idebenone in Nanoparticles Based on Chitosan and *N*-Carboxymethylchitosan 1411  
**C. M. de Amorim, D. J. A. Netz, A. G. Couto, R. A. de Freitas, T. M. B. Bresolin**
- Simultaneous Determination of Ebastine and Its Active Metabolite (Carebastine) in Human Plasma Using LC-MS-MS 1417  
**Sheng Feng, Ji Jiang, Peng Wang, Dongyang Liu, Pei Hu**
- Rapid Determination of Meropenem in Biological Fluids by LC: Comparison of Various Methods for Sample Preparation and Investigation of Meropenem Stability 1423  
**K. Kipper, K. Anier, I. Leito, J. Karjagin, K. Oselin, K. Herodes**
- LC Analysis of Isepamicin in Plasma Samples Post-Inhalation with Fluorescence Detection and Its Application to a Pharmacokinetic Study 1429  
**Xiaojuan Chang, Jingdong Peng**
- LC-UV Analysis of *N*-(3-(2,4-Dioxo-1,4-dihydro-2*H*-quinazolin-3-yl)propyl)-*N*-(4-(3-(2,4-dioxo-1,4-dihydro-2*H*-quinazolin-3-yl)propyl-amino)butyl)acetamide (SP-8203) in Rat Plasma, Urine, and Gastrointestinal Tract Samples 1435  
**Young Hee Choi, Jung Hwa Suh, Joo Hyun Lee, Il Hwan Cho, Chul Kyu Lee, Myung Gull Lee**
- Simultaneous Determination of Andrographolide and Dehydroandrographolide in Chicken Plasma for Application to Pharmacokinetic Studies 1441  
**Kaiyong Liu, Limin He, Hai Gao, Xianhui Huang, Zhigang Jiang, Zhenling Zeng**
- Medium-Pressure Liquid Chromatography Coupled to Electrospray Ionization Mass Spectrometry for Separation and On-Line Characterization of Flavonoids from *Asparagus officinalis* 1447  
**Zhiguo Hou, Jianguang Luo, Lingyi Kong**
- LC Determination of Five Flavonoid Aglycones in the Tibetan Medicinal Plant *Oxytropis falcata* Bunge 1451  
**Huan Yang, Jun Chen, Hao Cai, Huiqin Xu, Li Tong, Baochang Cai**
- An LC-DAD Fingerprinting Method for Alkaloids, Flavonoids and Styrylpyrones from *Cryptocarya mandiocana* 1455  
**K. F. Bandeira, A. J. Cavalheiro**

#### Electrophoresis/Electrochromatography

- Determination of Picoxystrobin and Pyraclostrobin by MEKC with On-Line Analyte Concentration 1461  
**C. F. de Souza, A. L. M. C. da Cunha, R. Q. Aucélio**
- Simultaneous Determination of Dopamine, Epinephrine and 5-Hydroxytryptamine in Toad Venom and Common Yam Rhizome by MEKC 1467  
**Shumin Wang, Zhi Luo, Weiping Wang, Xingguo Chen, Zhide Hu**
- Optimization and Validation of a Capillary MEKC Method for Determination of Proteins in Urine 1473  
**N. K. Glavač, R. Injac, S. Kreft**
- Amino Acid Profile Determination in the Urine of Bladder Cancer Patients by CE-MS with On-Line pH-Mediated Stacking and Pattern Recognition 1479  
**Shufang Wang, Ping Yang, Xiaoping Zhao**

#### Gas Chromatography

- Polyunsaturated Fatty Acids in Dried Milk Samples: Validation of a Lipid Separation-Free Method 1485  
**D. Gastaldi, C. Medana, R. Aigotti, V. Giancotti, C. Baiocchi**
- A Simple and Sensitive Analytical Method for Determination of Naltrexone Level in Plasma by GC-MS 1491  
**R. Mehrdad, A. Khosrou, D. Rassoul, V.-G. Sanaz, A. Mohsen**
- Determination of T-2 Toxin in Traditional Chinese Herbal Medicines by GC-ECD 1495  
**Yan-Tao Yue, Xiao-Fei Zhang, Zhen Ou-Yang, Wei-Wei Gao, Jun Wu, Mei-Hua Yang**



# Contents

## Vol. 70, 2009, November (No. 9/10)

### Limited Short Communication

#### Column Liquid Chromatography

- Investigation of Novel Peptide Chiral Selectors Prepared by Solid-Phase Synthesis with a *tert*-Butoxycarbonyl Amino Acid 1501  
K. Ohyama, K. Oyamada, N. Kishikawa, M. Arakawa, Y. Ohba, M. Kamino, M. Wada, K. Nakashima, N. Kuroda
- Quantitative Determination of Busulfan in Human Plasma by UPLC 1505  
Q. A. Xu, R. Kazerooni, J. K. Thapar, B. D. Andersson, T. L. Madden
- Simple and Sensitive Determination of Metformin in Human Plasma Using an Ion-Pair LC Method 1511  
Qing-Feng Liu, Zhong-Dong Li, Xiao-Jin Shi, Zheng Jiao, Ming-Kang Zhong
- Simultaneous LC Analysis of Aloe-Emodin, Rhein, Emodin, and Chrysophanol in Rhizoma Rhei-Type Preparations 1515  
Ping Ren, Feng Qin, Xi Huang, Zhengyan Zhu
- Simultaneous LC Analysis of Food Dyes in Soft Drinks 1519  
M. Serdar, Z. Knežević

#### Book Review 1523

#### Calendar of Events A9

#### Instructions to Authors A11

### Purchasing Information. Einkaufsnachweis

Chromatographs Liquid

Chromatography, HPLC-Systems

Detectors for Liquid

Wissenschaftlicher Gerätebau

**Dr.-Ing. H. Knauer GmbH**

Hegauer Weg 38

D-14163 Berlin

Tel. 030 / 809 727-0

Fax 030 / 801 50 10