

Contents

Vol. 67, 2008, May (No. 9/10)

Editorial

- Chromatographia and Its Scientific Future 671
H. Lingeman

Originals

Column Liquid Chromatography

- Quantification of the In Vitro and In Vivo Metabolic Fates of 2-, 3- and 4-Bromobenzoic Acids Using High Temperature LC Coupled to ICP-MS and Linear Ion Trap MS 673
C. J. Smith, S. Shillingford, A. M. Edge, C. Bailey, I. D. Wilson

- LC Determination of Malondialdehyde Concentrations in the Human Umbilical Vein Endothelial Cell Culture Medium: Application to the Antioxidant Effect of Vitexin-2''-O-rhamnoside 679
Xixiang Ying, Haibo Li, Zhili Xiong, Zhaoshu Sun, Shuang Cai, Wenliang Zhu, Yujin Bi, Famei Li

- LC-MS-MS Simultaneous Determination of Paracetamol, Pseudoephedrine and Chlorpheniramine in Human Plasma: Application to a Pharmacokinetic Study 687
Qiongfeng Liao, Zhiyong Xie, Biyan Pan, Chenchen Zhu, Meicun Yao, Xinjun Xu, Jinzhi Wan

- LC-MS Determination and Pharmacokinetic Study of Salidroside in Rat Plasma after Oral Administration of Traditional Chinese Medicinal Preparation *Rhodiola crenulata* Extract 695
Juan Zhang, Xiaohui Chen, Peng Wang, Lin Huo, Zhenduo Shen, Xiaorui Guo, Weiming Cheng, Kaishun Bi

- An Improved Narrow-Bore LC Method for Quantification of Alfuzosin in Pharmaceutical Formulations 701
N. Aerakis, A. Vonaparti, I. Panderi

- Development and Validation of an LC Method for Simultaneous Determination of Ascorbic Acid and Three Phenolic Acids in Sustained Release Tablets at Single Wavelength 709
I. N. Urakova, O. N. Pozharitskaya, A. N. Shikov, V. M. Kosman, V. G. Makarov

Electrophoresis

- Hybridization Assay by Time-Resolved Capillary Gel Electrophoresis with a Lanthanide Chelate 715
K. Sumitomo, T. Ito, M. Sasaki, Y. Yamaguchi

- Rapidly Characterizing the Growth of Au Nanoparticles by CE 723
Tung-Hao Chang, Fu-Ken Liu, Yu-Cheng Chang, Tieh-Chi Chu

Gas Chromatography

- Application of Pentafluorobenzyl and Hexafluoroisopropyl Esters for Retention Indexes in GC-Negative Ion Chemical Ionization MS 731
K. Nakagawa, S. Kawana, S. Yamaguchi

- GC Investigation of the Solubility Parameters of Water-Soluble Homopolymers and Double-Hydrophilic Diblock Copolymers 741
D. Topaloğlu Yazıcı, A. Aşkın, V. Bütün

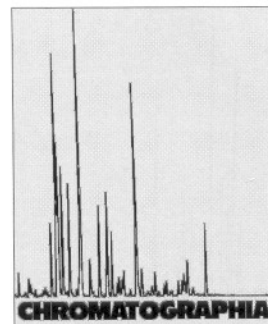
- GC Determination of Cisplatin in Serum and Urine of Cancer Patients after Chemotherapy as Platinum (II) Pyrrolidinedithiocarbamate Chelate 749
A. J. Laghari, M. Y. Khuhawar, L. A. Zardari, A. G. Bhatti

- GC Determination of Prilocaine HCl in Human Plasma: Analytical Application to Real Samples 755
Y. Kadioglu, A. Atila

- A Method for Quantifying Azoxystrobin Residues in Grapes and Soil Using GC with Electron Capture Detection 761
Wei Li, Yi-Jun Wu, Dong-Mei Qin, Yan Ma, Ying-Jian Sun, Shao-Ping Qiu

Contents

Vol. 67, 2008, May (No. 9/10)



Full Short Communications

Column Liquid Chromatography

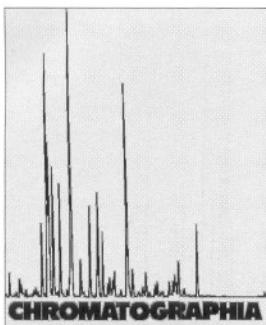
- Dynamic On-Column Eluent Modification: A Novel Strategy for Peak Resolution Enhancement. Application to the Preparative Separation of Ecdysteroid Isomers
A. Hunyadi, H. Kalász, M. Báthori 767
- On-Line Sample Treatment LC System for MS Compatibility
Yuki Hashi, Jian-Guo Yao, Yue-Qi Li, Yan Liu, Jin-Ming Lin 773
- Enantiomeric LC Separation of Epinephrine on Amylose Based Sorbent
V. P. Rane, K. R. Patil, J. N. Sangshetti, D. B. Shinde 777
- Comparison of LC and UPLC Coupled to MS-MS for the Determination of Sulfonamides in Egg and Honey
V. Tamošiūnas, A. Padarauskas 783
- Development and Validation of an SPE-LC Method for the Simultaneous Determination of *trans*-Resveratrol and Selected Flavonoids in Wine
A. Zotou, E. Frangi 789
- LC Determination and Bioequivalence Study of Pantoprazole in Human Plasma
Honggang Lou, Hong Yuan, Zourong Ruan, Donghang Xu, Quan Zhou 795
- LC-Tandem-MS Development and Validation for the Determination of Tegaserod in Beagle Dog Plasma and Its Application to a Pharmacokinetic Study
Shuang-Qing Zhang, Guo-Hua Chen 801
- LC Analysis and Pharmacokinetic Study of Pachymic Acid After Intravenous Administration to Rats
Yue Alatengqimuge, Xiu-Wei Yang, Yan Zheng, Lian Ma, Wei Lu 807
- Comparison Between Fluorescence and Pulsed Integrated Electrochemical Detectors for the Determination of Taurine in Human Skin, Urine and Plasma by CE
D. L. P. da Silva, Y. Mrestani, H.-H. Rüttinger, J. Wohlrab, R. Neubert 813
- Simultaneous Determination of the Active Ingredients in *Abelmoschus manihot* (L.) Medicus by CZE
Yi Liu, Wujie Li, Xiaomei Ling, Xianyin Lai, Yuzhen Li, Qingying Zhang, Yuying Zhao 819

Electrophoresis

Limited Short Communications

Column Liquid Chromatography

- Determination of Sugars by LC with On-Line Electrogenerated $\text{Cu}(\text{HIO}_6)_2^{5-}$ -Luminol Chemiluminescence Detection
Yonghua Sun, Zhujun Zhang, Yantu Zhang, Yue Wei 825
- Establishment of the Model CD40 Cell Membrane Chromatography and Its Chromatographic Characteristics
Guangde Yang, Rong Lin, Zhen Hu, Jiye Zhang, Chunjie Han, Langchong He, Weirong Wang 829
- LC-ESI-MS Determination of Hydroxycamptothecin in Rat Plasma
Kai Liu, Jin Sun, Yongjun Wang, Kun Gao, Bing Wen, Yuan He, Zhonggui He 833
- Development and Validation of LC Method for Simultaneous Determination of Two Binary Mixtures Containing Indapamide
A. A. Elshanawane, S. M. Mostafa, M. S. Elgawish 837
- Stress Degradation Studies on Dutasteride and Development of a Stability-Indicating HPLC Assay Method for Bulk Drug and Pharmaceutical Dosage Form
D. V. Subba Rao, P. Radhakrishnanand 841



Contents

Vol. 67, 2008, May (No. 9/10)

Gas Chromatography

- Ethyl Chloroformate as a Derivatizing Reagent for Capillary GC Determination of Dopamine, Adrenaline, Putrescine, and Histamine 847
M. Y. Khuhawar, L. A. Zardari, A. J. Laghari

Letter to the Editors

- Application of LC-MS for Determination of Indole and 3-Methylindole in Porcine Adipose Tissue 853
M. Lacorn / G. Zamaratskaia, J. Jastrebova

Book Review

855

Calendar of Events

A9

Instructions to Authors

A11

Purchasing Information. Einkaufsnachweis

Chromatographs Liquid

Chromatography, HPLC-Systems

Detectors for Liquid

Wissenschaftlicher Gerätebau

Dr.-Ing. H. Knauer GmbH

Hegauer Weg 38

D-14163 Berlin

Tel. 030 / 809 727-0

Fax 030 / 801 50 10