

Scrap Tire NEWS

Covering The News And Developments In The Scrap Tire Recycling Industry

Vol. 24, No. 12

www.scraptirenews.com

December 2010

EPA Turns 40

On December 2, 1970, amid growing public concern about the nation's deteriorating air and water quality, the U.S Environmental Protection Agency (EPA) was formed by an executive order of President Richard M. Nixon. The new Agency was charged with a mission to "permit coordinated and effective government action on behalf of the environment."

From that time to the present, America's environmental history has stood witness to both dramatic events and remarkable progress. In 1969, just before the agency was established, the Cuyahoga River in Ohio became so polluted that it caught fire – a situation that provided impetus for Congress to pass the federal Clean Water Act. By 2009, concern about

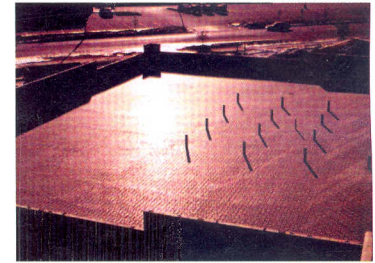
See EPA Turns 40 page 11...

IN THIS ISSUE:

TX Hwy Repavement	3
Lehigh Tech Center	5
Rubber Recycling News	6
KAB 2010 Results	8
TDA Educational Video.....	11
Steward Fees Remain.....	12
Rubber Tech Int'l Sold.....	13
Recycling in Illinois.....	13
Australian Exporting	14
Continental Winners.....	15
Granutech Canada	16
News Briefs	17
Calendar	17

VAST Enterprises To Manufacture Composite Roof Pavers for Firestone Building Products

During Greenbuild 2010 in Chicago, Illinois last month VAST Enterprises, LLC announced that Firestone Building Products Company, LLC (FSBP) has selected VAST as its exclusive manufacturer of Firestone SkyPaver™ Composite Roof Pavers. FSBP is a global leader in commercial roofing systems and materials. VAST is the material science research and manufacturing company that invented composite masonry as a green alternative to clay brick and concrete pavers.



Firestone chose light weight Vast pavers for their strength and design versatility on flat roofs

SkyPaver™ is an interlocking roof paver system manufactured in VAST's advanced composite material that is an engineered blend of 90 to 95 percent recycled car tires and plastic containers. Each SkyPaver™ unit consists of a 16x16-inch installation grid with eight composite pavers, which are 4x8 inches. Each SkyPaver™ weighs only 6.23 pounds per square foot (one-third the weight of concrete pavers). Interlocked grids establish an integrated surface installed directly on a horizontal drainage mat.

"The market for green roofs grew by more than 15 percent in 2009, and an estimated 10 million square feet of green roofs are now installed annually. In addition, more projects are

See VAST Enterprises page 8...

TDA Will Cushion New Light Rail Line

The Bay Area Rapid Transit District (BART) intends to incorporate "green" construction in a planned route extension by using recycled tires underneath the new rail lines. The decision is applauded by the Department of Resources Recycling and Recovery (CalRecycle), which promotes the use of tire-derived aggregate (TDA) in engineering projects.



TDA reduces noise and vibration on light rail lines

Construction crews plan to use at least 250,000 scrap tires which have been processed into 3-inch tire-derived aggregate and laid under large sections of the tracks, to act as shock absorbers, reducing vibration and noise along the route as BART is built from Fremont to San Jose's Berryessa neighborhood in the next seven years.

TDA is shredded tire rubber used as a replacement for naturally mined materials such as gravel, but has numerous additional advantages. It is safe, reliable, and above all, a cost-effective option that keeps waste tires out of landfills. When used under rail tracks, TDA acts to reduce noise and vibration that can affect nearby buildings and residences.

See TDA page 10 ...